

Table of Contents

[Overview](#)

[Theory of CIC](#)

[System Components](#)


[Applications](#)

[Recommended Resources](#)



Combustion IC System

Halogen and sulfur determinations-pyrolysis of difficult samples

Table of Contents[Overview](#)[Theory of CIC](#)[System Components](#)[Applications](#)[Recommended Resources](#)

Fully Automated Analysis of Halogens and Sulfur in Petrochemicals, Industrial Chemicals, and Consumer Products

Fluorine, chlorine, bromine, and sulfur can cause corrosion in many industrial processes, decrease the lifetime of many catalysts, and cause environmental pollution. The combustion IC system developed by Mitsubishi (Japan) and Thermo Fisher Scientific (USA) can be used for automated qualitative and quantitative analysis of halogens and sulfur in samples comprised of difficult matrices - intractable solids, semisolids, liquids and even gasses. Samples can be as diverse as petrochemicals, coal-based chemicals, construction materials, chemicals, polymers, and pharmaceutical intermediates and finished formulations.

Analysis of Corrosive Species in Complex Matrices

Petrochemicals, gaseous samples, solid samples, and complex chemicals are very difficult to analyze with conventional ion chromatography (IC). Sample preparation is required to extract analytes or remove interfering matrices, and these techniques are costly and labor intensive. Automated combustion IC reduces the time and labor for determination of corrosive halogens and sulfur in difficult samples, by eliminating complex sample preparation steps. The samples are pyrolyzed in an oxidizing atmosphere, the resultant vapors are absorbed in an aqueous solution, then introduced directly into the IC system for analysis. This automated method is highly sensitive, easy-to-use, saves time and produces fewer environmental contaminants than other sample preparation procedures such as acid digestions, or back extractions from organic solutions.

The system provides:

- Pyrolysis of complex samples
- Analysis of gaseous, solid, and viscous samples
- High precision and accuracy
- Full compliance with ASTM D7359-08 and other international methods the analysis of many types of materials.

Table of Contents

[Overview](#)

[Theory of CIC](#)

[System Components](#)

[Applications](#)

[Recommended Resources](#)

Theory of Combustion IC

Solid or semisolid samples are introduced into the AQF-2100 using the ABC-240S Automatic Boat Controller. Pyrolysis occurs at 800–1100 °C. The samples are oxidized by O₂ at high temperature and the vapors are sparged through the absorbing solution. The samples in the absorbing solution are transferred to the IC system for analysis. Phosphate may be added to the absorbing solution as an internal standard to calibrate the analytical results. H₂O₂ is added in the absorbing solution to oxidize SO₂, which results from the incomplete oxidization of S, to SO₃, which is then quantitated as SO₄²⁻.

Major Applications

- S, Cl, F, and Br in plastics
- Cl, F, Br in pharmaceutical raw materials and finished ingredients
- Cl in epoxy resins
- S, Cl, and Br in industrial lumber plates
- Br in disposable (one-time use) polymers
- Cl in lubricating oil
- F, Br, and I in soil samples
- F in ores
- Cl and F in aluminum powder
- F in polishing agents

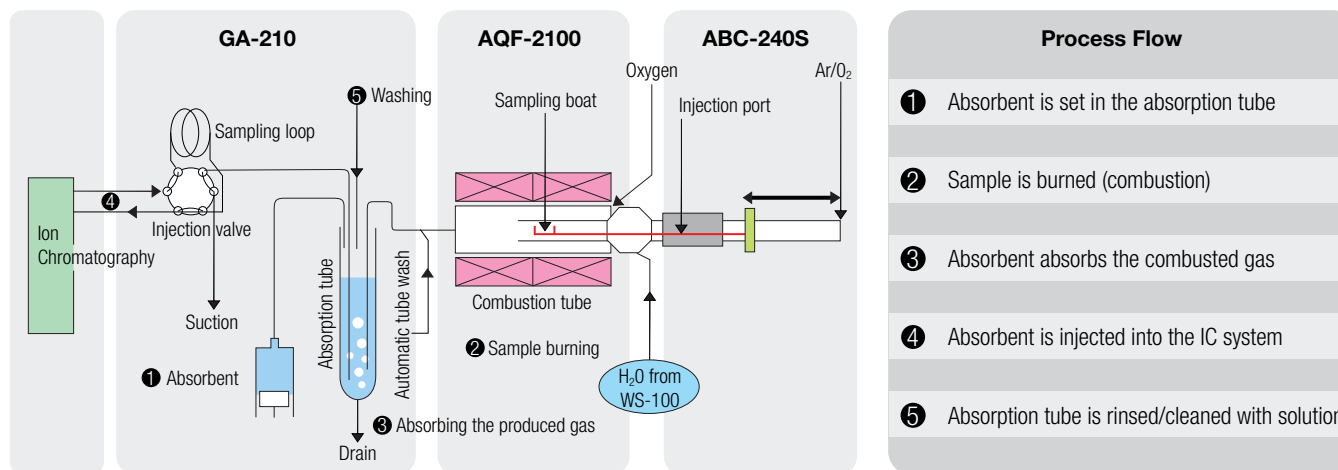
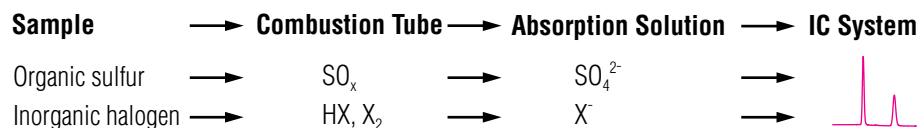


Table of Contents

[Overview](#)

[Theory of CIC](#)

[System Components](#)

[Applications](#)

[Recommended Resources](#)



Table of Contents

[Overview](#)

[Theory of CIC](#)

[System Components](#)

[Applications](#)

[Recommended Resources](#)



GA-210 Absorbance System Specifications

Absorption Tube:

Heat-resistant glass, 10 or 20 mL

Six-Way Valve

Injection Pump:

5 mL high-pressure channel, Teflon® or PEEK

- 1 Absorbion tube
- 2 Injection valve
- 3 Absorbing agent distributor
- 4 IC connection tube
- 5 Introduction of combustion gas
- 6 Introduction of liquid sample

Table of Contents

[Overview](#)

[Theory of CIC](#)

[System Components](#)

[Applications](#)

[Recommended Resources](#)



Thermo Scientific™ Dionex™ ICS-900 IC system

- High-performance, low-pulse high-pressure pump
- Thermally controlled digital conductivity cell
- Thermo Scientific™ Dionex™ MMS™ MicroMembrane™ Suppressor
- Thermo Scientific™ Dionex™ Chromeleon™ Chromatography Data System (CDS) SE software



Thermo Scientific Dionex ICS-1100 IC system

- LED front panel
- High-performance dual-piston pump
- Thermally controlled digital conductivity cell
- Electrolytic suppressor
- Chromeleon CDS software



Thermo Scientific Dionex ICS-1600 IC system

- LCD high-resolution color touch panel
- High-performance dual-piston pump
- Thermally controlled digital conductivity cell
- Electrolytic suppressor
- Column heater
- Chromeleon CDS software



Thermo Scientific Dionex ICS-2100 IC system

- LCD high-resolution color touch panel
- Reagent-Free™ IC system
 - Eluent generator
 - Electrolytic suppressor
 - Thermo Scientific Dionex CR-TC Continuously Regenerated Trap Column
- High-performance dual-piston pump
- Thermally controlled digital conductivity cell
- Column heater
- Chromeleon CDS software

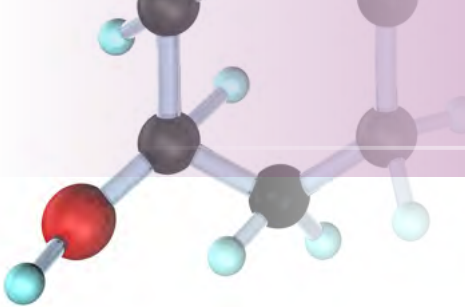


Table of Contents

[Overview](#)

[Theory of CIC](#)

[System Components](#)

[Applications](#)

[Chlorine and Sulfur in Petroleum Samples](#)

[Chlorine and Sulfur in Coal](#)

[Halogens in Printing Dyes and Inks](#)

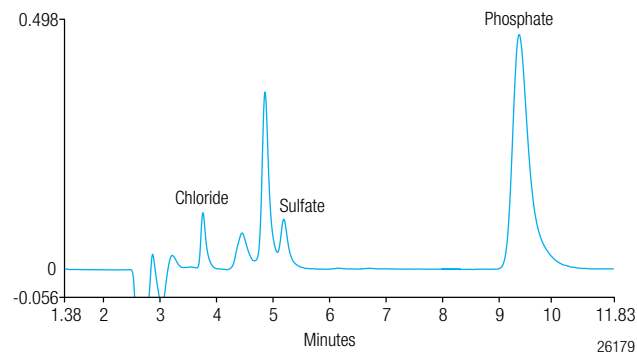
[Halogens from Electronic Components](#)

[Recommended Resources](#)

Simplified Analysis for Complex Samples Using Combustion Ion Chromatography (CIC)

Chlorine and Sulfur in Petroleum Samples

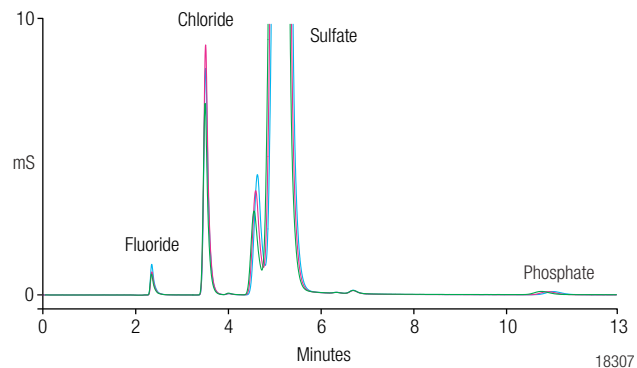
Sulfur in petroleum products causes corrosion in pipelines, poisons catalysts, affects stability during storage, and can decrease product performance. Chlorine corrodes equipment, clogs pipelines, and increases catalyst consumption during manufacturing and limits product quality.



Chlorine and sulfur in a refinery intermediate, detected as chloride and sulfate.

Chlorine and Sulfur in Coal

Chlorine content of coal is a key parameter to be determined for mercury emissions and control. For CIC analysis, ground coal powder is pyrolyzed in the combustion chamber (AQF) and the gaseous combustion products are introduced to the absorption equipment using argon gas. Sulfur dioxide (SO₂), hydrogen fluoride (HF), and hydrogen chloride (HCl) are trapped by an aqueous absorption solution consisting of a known amount of phosphate (internal standard) and a small percentage of hydrogen peroxide (H₂O₂).



Reproducibility of coal samples (overlay of three injections).

Table of Contents

[Overview](#)

[Theory of CIC](#)

[System Components](#)

[Applications](#)

[Chlorine and Sulfur in Petroleum Samples](#)

[Chlorine and Sulfur in Coal](#)

[Halogens in Printing Dyes and Inks](#)

[Halogens from Electronic Components](#)

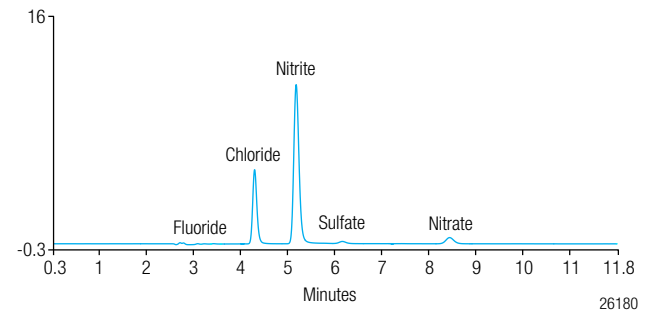
[Recommended Resources](#)

Halogens in Printing Dyes and Inks

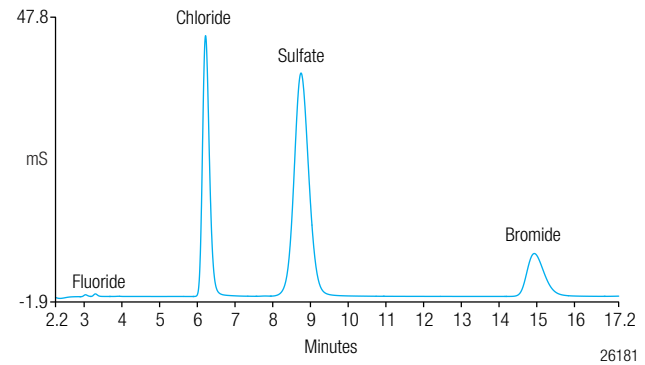
Manufacturers of printing dyes and inks need to ensure that corrosive halogens are to low concentrations, to prevent high failure rates of print cartridges due to corrosion of the product circuitry. CIC provides a simple solution in determining halogens in such difficult, high-organic matrices. The organic matrix is eliminated by pyrolysis and the halides produced are absorbed in a solution which is directly injected into an IC system for rapid analysis.

Halogens from Electronic Components

Brominated flame retardants have been used as flame retardants in printed circuit boards. This is now prohibited by Restriction of Hazardous Substances (RoHS) and WEEE (Waste from Electrical and Electronic Equipment) regulations. CIC provides a fast and reliable method for measuring the halogen content of various consumer products and the associated waste streams. Lack of bromide in the sample is evidence that prohibited brominated compounds are not present.



◀ Halogens and sulfur in black dye, determined in their ionic forms.



◀ Fluorine, chlorine, sulfur, and bromine from electronic components.

Table of Contents

[Overview](#)

[Theory of CIC](#)

[System Components](#)

[Applications](#)

[Recommended Resources](#)



For More Information

View
On-Demand
Webcast

Webcast:

Combustion Ion Chromatography - Solving Difficult to Process Analytical Samples

Download
Poster
Note

Poster Note:

Combustion Ion Chromatography - Enhancing Halogen Detection Using Preconcentration Methods

www.thermoscientific.com

©2014 Thermo Fisher Scientific Inc. All rights reserved. ISO is a trademark of the International Standards Organization. GA-210, AQF-2100 and ABC-240S are registered trademarks of Mitsubishi. Teflon is a trademark of E. I. du Pont de Nemours. All other trademarks are the property of Thermo Fisher Scientific Inc. and its subsidiaries. This information is presented as an example of the capabilities of Thermo Fisher Scientific Inc. products. It is not intended to encourage use of these products in any manners that might infringe the intellectual property rights of others. Specifications, terms and pricing are subject to change. Not all products are available in all countries. Please consult your local sales representative for details.



Thermo Fisher Scientific,
Sunnyvale, CA USA is
ISO 9001:2008 Certified.

Africa +43 1 333 50 34 0
Australia +61 3 9757 4300
Austria +43 810 282 206
Belgium +32 53 73 42 41
Brazil +55 11 3731 5140
Canada +1 800 530 8447
China 800 810 5118 (free call domestic)
400 650 5118

Denmark +45 70 23 62 60
Europe-Other +43 1 333 50 34 0
Finland +358 9 3291 0200
France +33 1 60 92 48 00
Germany +49 6103 408 1014
India +91 22 6742 9494
Italy +39 02 950 591

Japan +81 6 6885 1213
Korea +82 2 3420 8600
Latin America +1 561 688 8700
Middle East +43 1 333 50 34 0
Netherlands +31 76 579 55 55
New Zealand +64 9 980 6700
Norway +46 8 556 468 00

Russia/CIS +43 1 333 50 34 0
Singapore +65 6289 1190
Sweden +46 8 556 468 00
Switzerland +41 61 716 77 00
Taiwan +886 2 8751 6655
UK/Ireland +44 1442 233555
USA +1 800 532 4752

Thermo
SCIENTIFIC

A Thermo Fisher Scientific Brand